

Maritime Safety Queensland



Gold Coast Seaway

Beacon to Beacon Guide

Northern Gold Coast

Published by

Maritime Safety Queensland

© Copyright The State of Queensland
(Department of Transport and Main Roads) 2014



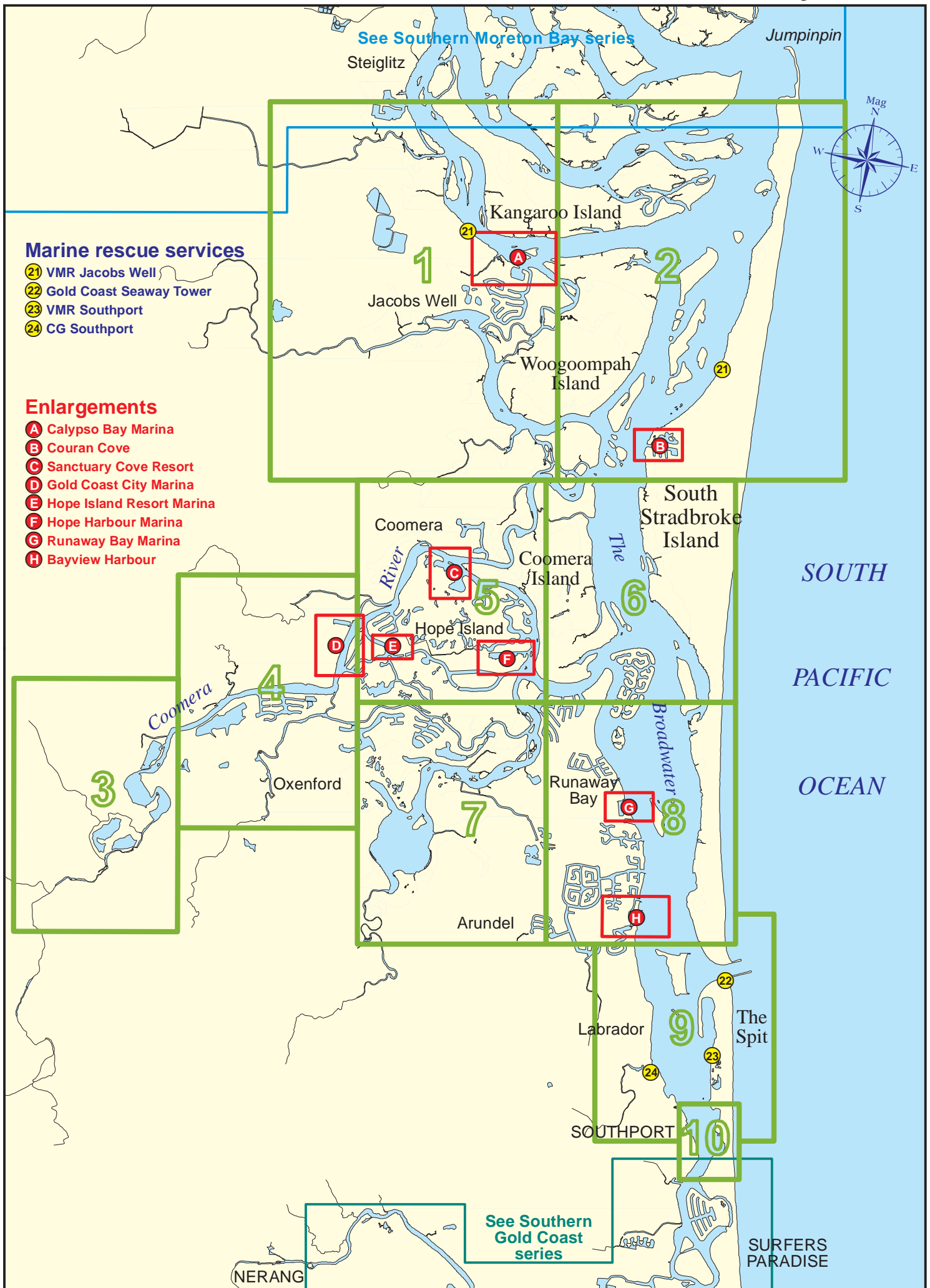
To view a copy of this licence, visit
<http://creativecommons.org/licenses/by/3.0/au>

For commercial use terms and conditions

Please visit the Maritime Safety Queensland
website at www.msq.qld.gov.au

'How to' use this guide

Use this Beacon to Beacon Guide with
the 'How to' and legend booklet available from
www.msq.qld.gov.au





Always keep a proper lookout when boating.

Look up and live for power and cable crossings that may not be shown on these maps due to scale or recent construction.

CAUTION: depth contours have not been re-surveyed in most areas since the 2011 and 2013 floods.

Exercise care when travelling outside suggested navigation tracks.

© Copyright The State of Queensland 2014

Queensland Department of Transport and Main Roads - Maritime Safety Queensland.

To reproduce any map within this series, see terms and conditions at Maritime Safety Queensland's website (www.msq.qld.gov.au)

Nautical information current to 16 June 2014.





Always keep a proper lookout when boating.

Look up and live for power and cable crossings that may not be shown on these maps due to scale or recent construction.

CAUTION: depth contours have not been re-surveyed in most areas since the 2011 and 2013 floods.

Exercise care when travelling outside suggested navigation tracks.

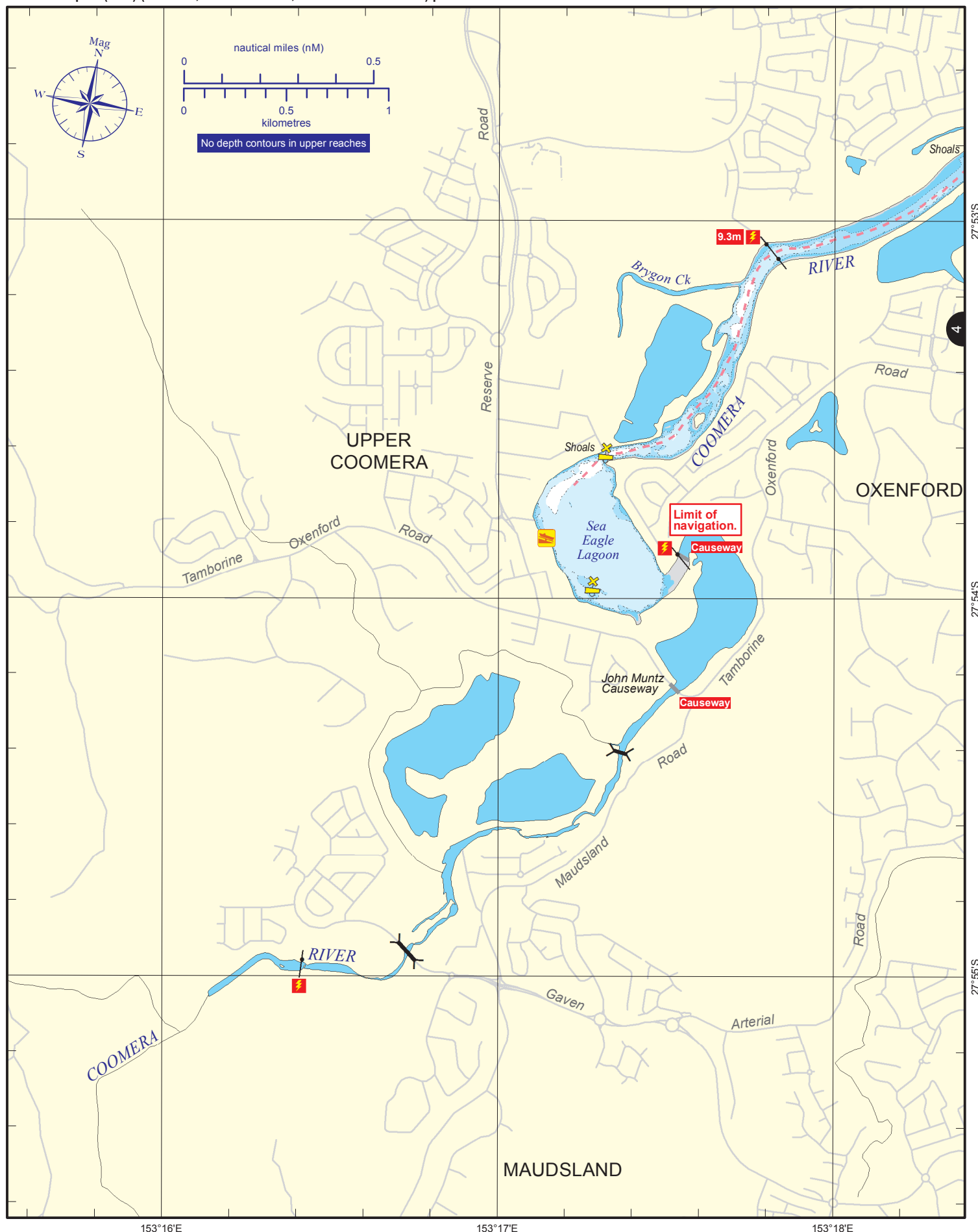
© Copyright The State of Queensland 2014

Queensland Department of Transport and Main Roads - Maritime Safety Queensland.

To reproduce any map within this series, see terms and conditions at Maritime Safety Queensland's website (www.msq.qld.gov.au)

Nautical information current to 16 June 2014.





Always keep a proper lookout when boating.

Look up and live for power and cable crossings that may not be shown on these maps due to scale or recent construction.

CAUTION: depth contours have not been re-surveyed in most areas since the 2011 and 2013 floods.

Exercise care when travelling outside suggested navigation tracks.

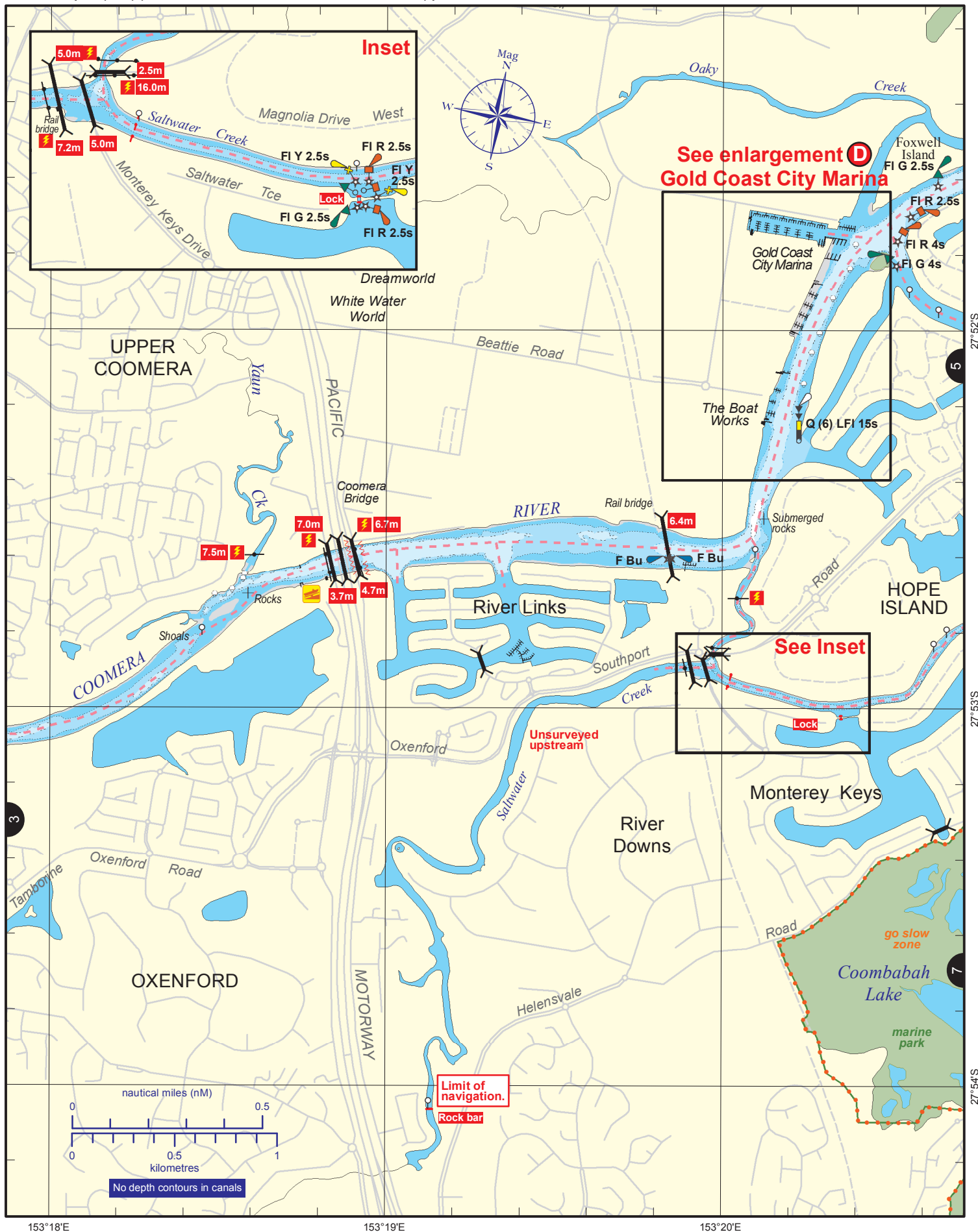
© Copyright The State of Queensland 2014

Queensland Department of Transport and Main Roads - Maritime Safety Queensland.

To reproduce any map within this series, see terms and conditions at Maritime Safety Queensland's website (www.msq.qld.gov.au)

Nautical information current to 16 June 2014.





Always keep a proper lookout when boating.

Look up and live for power and cable crossings that may not be shown on these maps due to scale or recent construction.

CAUTION: depth contours have not been re-surveyed in most areas since the 2011 and 2013 floods.

Exercise care when travelling outside suggested navigation tracks.

© Copyright The State of Queensland 2014

Queensland Department of Transport and Main Roads - Maritime Safety Queensland.

To reproduce any map within this series, see terms and conditions at Maritime Safety Queensland's website (www.msq.qld.gov.au)

Nautical information current to 16 June 2014.







Nautical information current to 16 June 2014.

CAUTION: depth contours have not been re-surveyed in most areas since the 2011 and 2013 floods.



To reproduce any map within this series, see terms and conditions at Maritime Safety Queensland's website (www.msg.qld.gov.au)



Always keep a proper lookout when boating.

Look up and live for power and cable crossings that may not be shown on these maps due to scale or recent construction.

CAUTION: depth contours have not been re-surveyed in most areas since the 2011 and 2013 floods.

Exercise care when travelling outside suggested navigation tracks.

© Copyright The State of Queensland 2014

Queensland Department of Transport and Main Roads - Maritime Safety Queensland.

To reproduce any map within this series, see terms and conditions at Maritime Safety Queensland's website (www.msg.qld.gov.au)

Nautical information current to 16 June 2014.





Nautical information current to 16 June 2014.

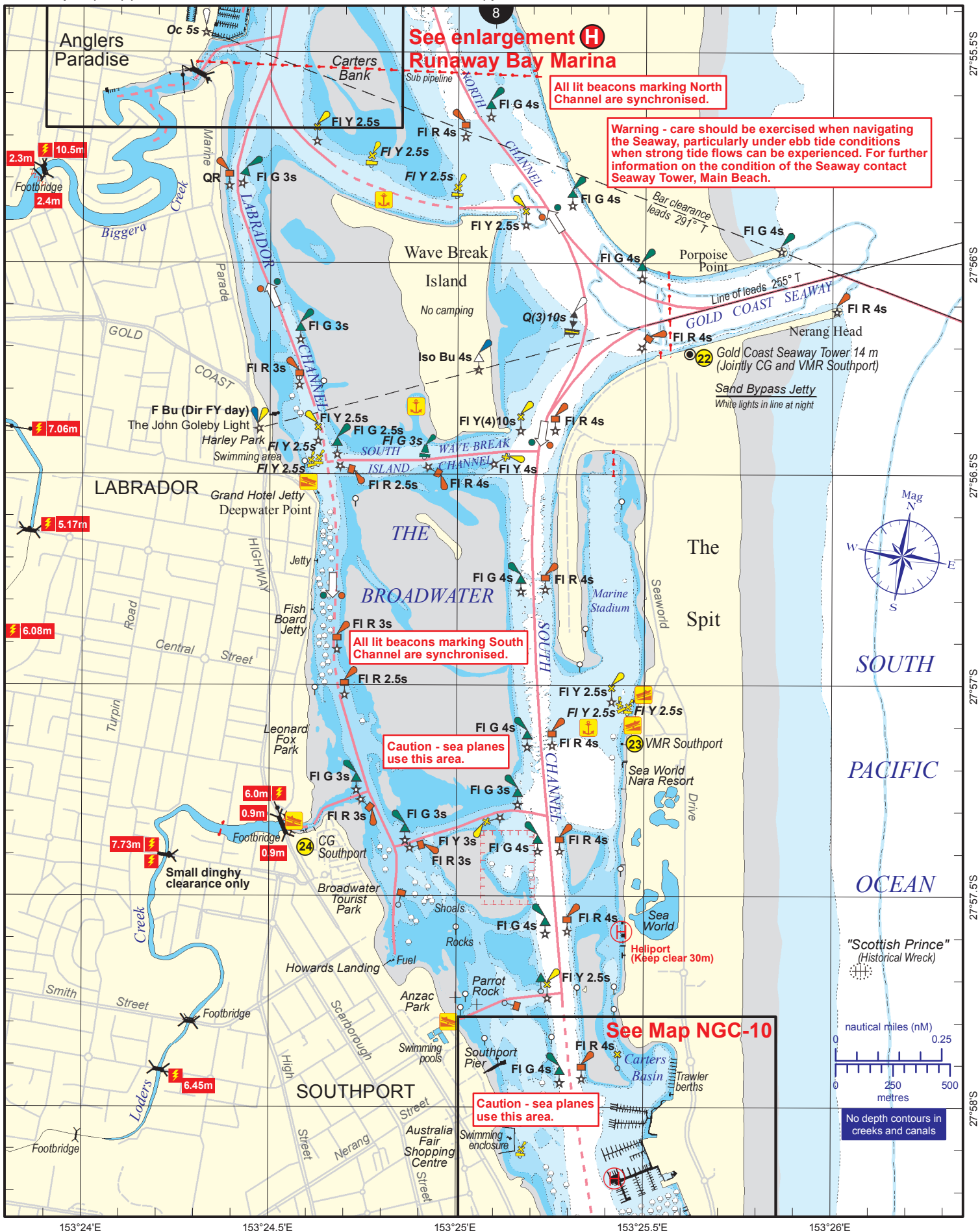
CAUTION: depth contours have not been re-surveyed in most areas since the 2011 and 2013 floods.



Queensland
Government

Queensland Department of Transport and Main Roads - Maritime Safety Queensland.

To reproduce any map within this series, see terms and conditions at Maritime Safety Queensland's website (www.msg.qld.gov.au)



Always keep a proper lookout when boating.

Look up and live for power and cable crossings that may not be shown on these maps due to scale or recent construction.

CAUTION: depth contours have not been re-surveyed in most areas since the 2011 and 2013 floods.

Exercise care when travelling outside suggested navigation tracks.

Nautical information current to 16 June 2014.

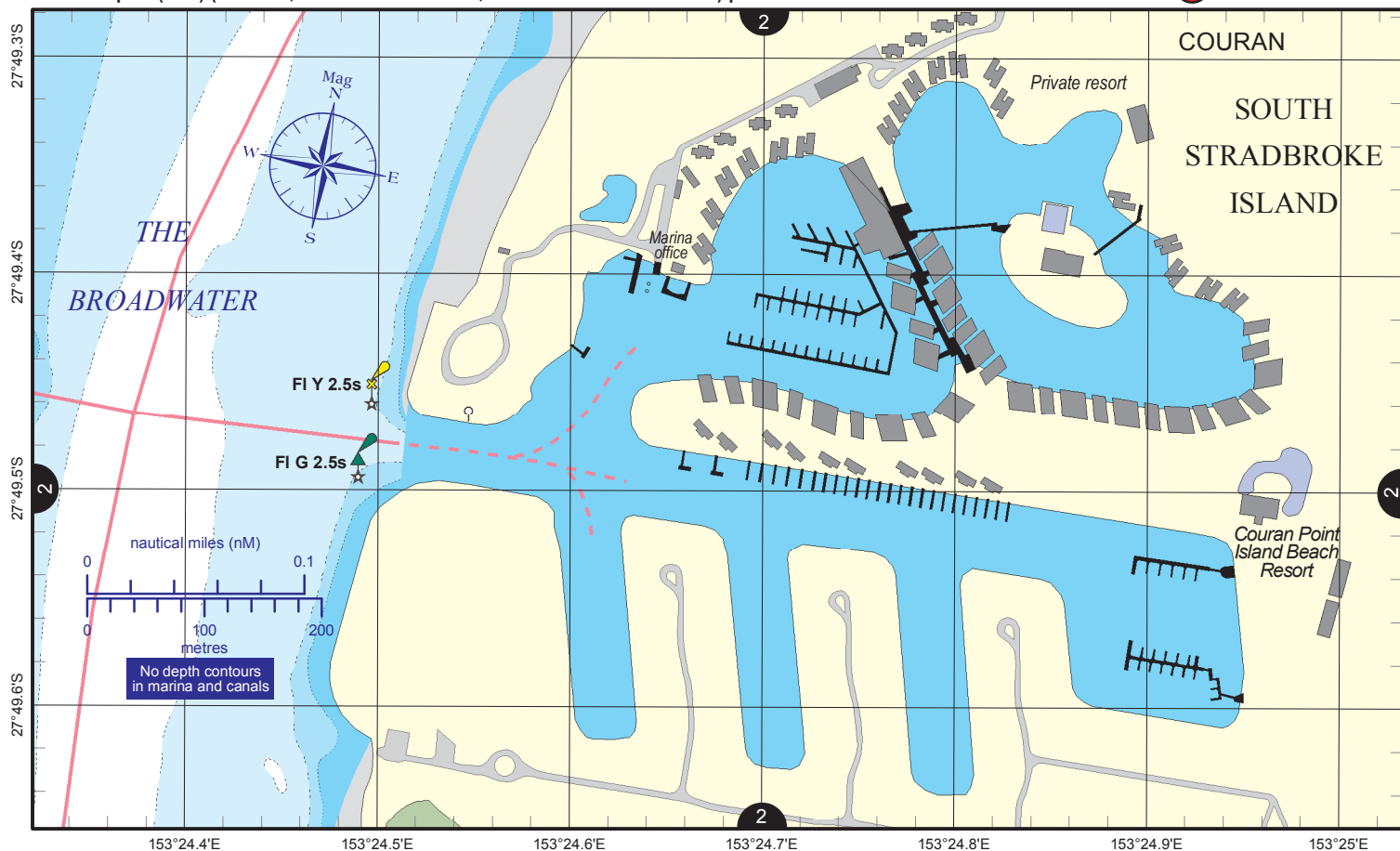
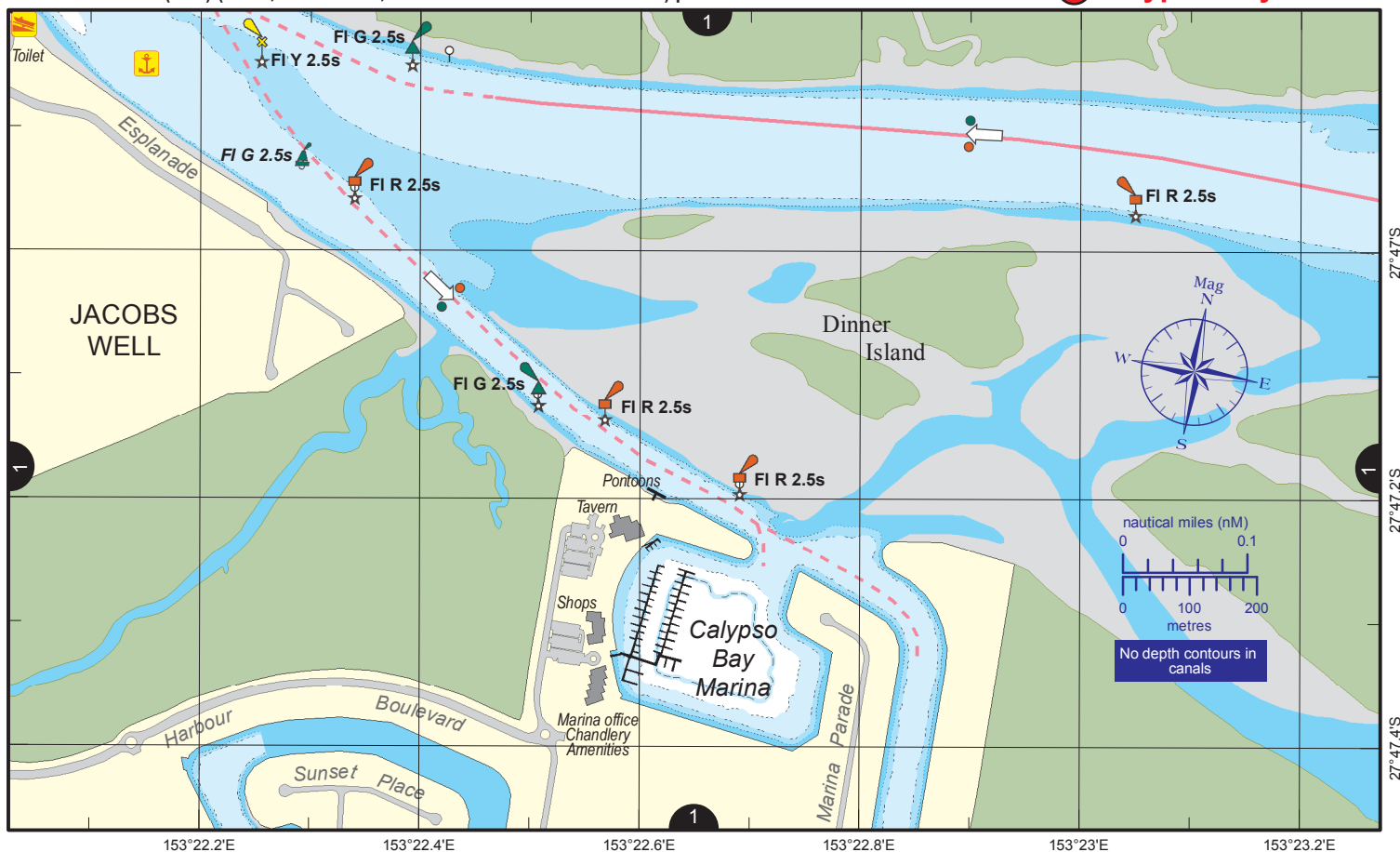
© Copyright The State of Queensland 2014

Queensland Department of Transport and Main Roads - Maritime Safety Queensland.

To reproduce any map within this series, see terms and conditions at Maritime Safety Queensland's website (www.msq.qld.gov.au)







Always keep a proper lookout when boating.

Look up and live for power and cable crossings that may not be shown on these maps due to scale or recent construction.

CAUTION: depth contours have not been re-surveyed in most areas since the 2011 and 2013 floods.

Exercise care when travelling outside suggested navigation tracks.

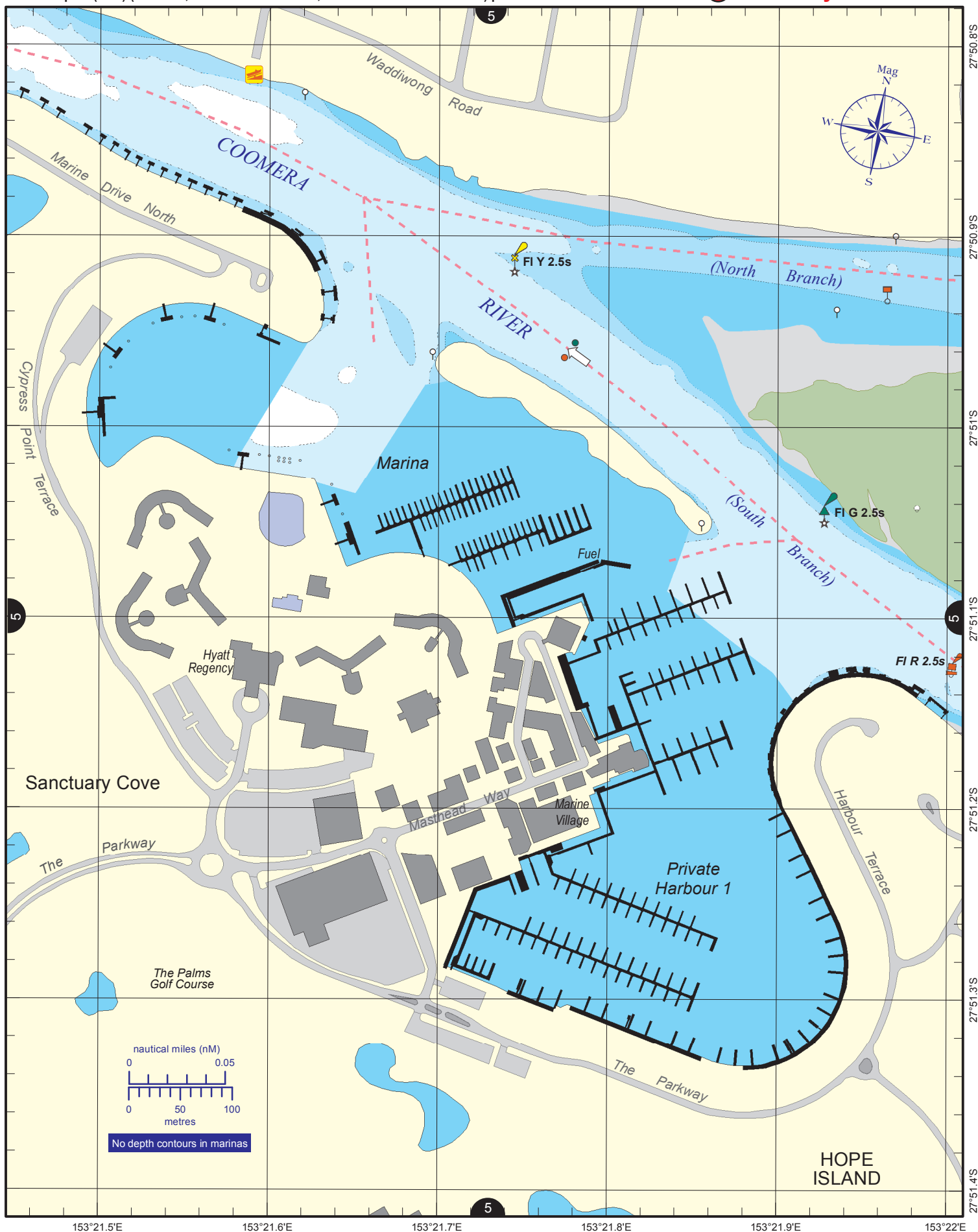
Nautical information current to 16 June 2014.

© Copyright The State of Queensland 2014

Queensland Department of Transport and Main Roads - Maritime Safety Queensland.

To reproduce any map within this series, see terms and conditions at Maritime Safety Queensland's website (www.msq.qld.gov.au)





Always keep a proper lookout when boating.

Look up and live for power and cable crossings that may not be shown on these maps due to scale or recent construction.

CAUTION: depth contours have not been re-surveyed in most areas since the 2011 and 2013 floods.

Exercise care when travelling outside suggested navigation tracks.

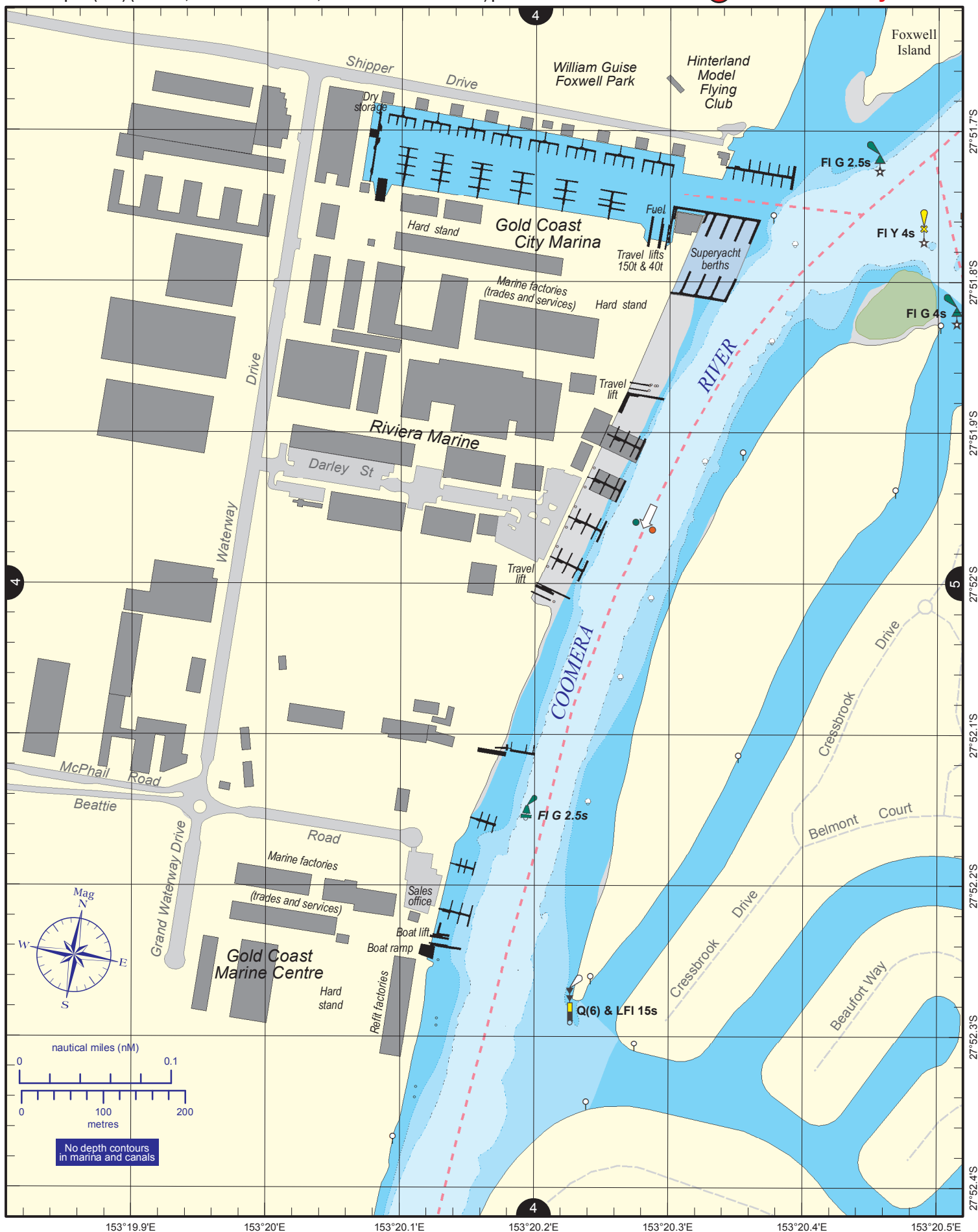
© Copyright The State of Queensland 2014

Queensland Department of Transport and Main Roads - Maritime Safety Queensland.

To reproduce any map within this series, see terms and conditions at Maritime Safety Queensland's website (www.msq.qld.gov.au)

Nautical information current to 16 June 2014.





Always keep a proper lookout when boating.

Look up and live for power and cable crossings that may not be shown on these maps due to scale or recent construction.

CAUTION: depth contours have not been re-surveyed in most areas since the 2011 and 2013 floods.

Exercise care when travelling outside suggested navigation tracks.

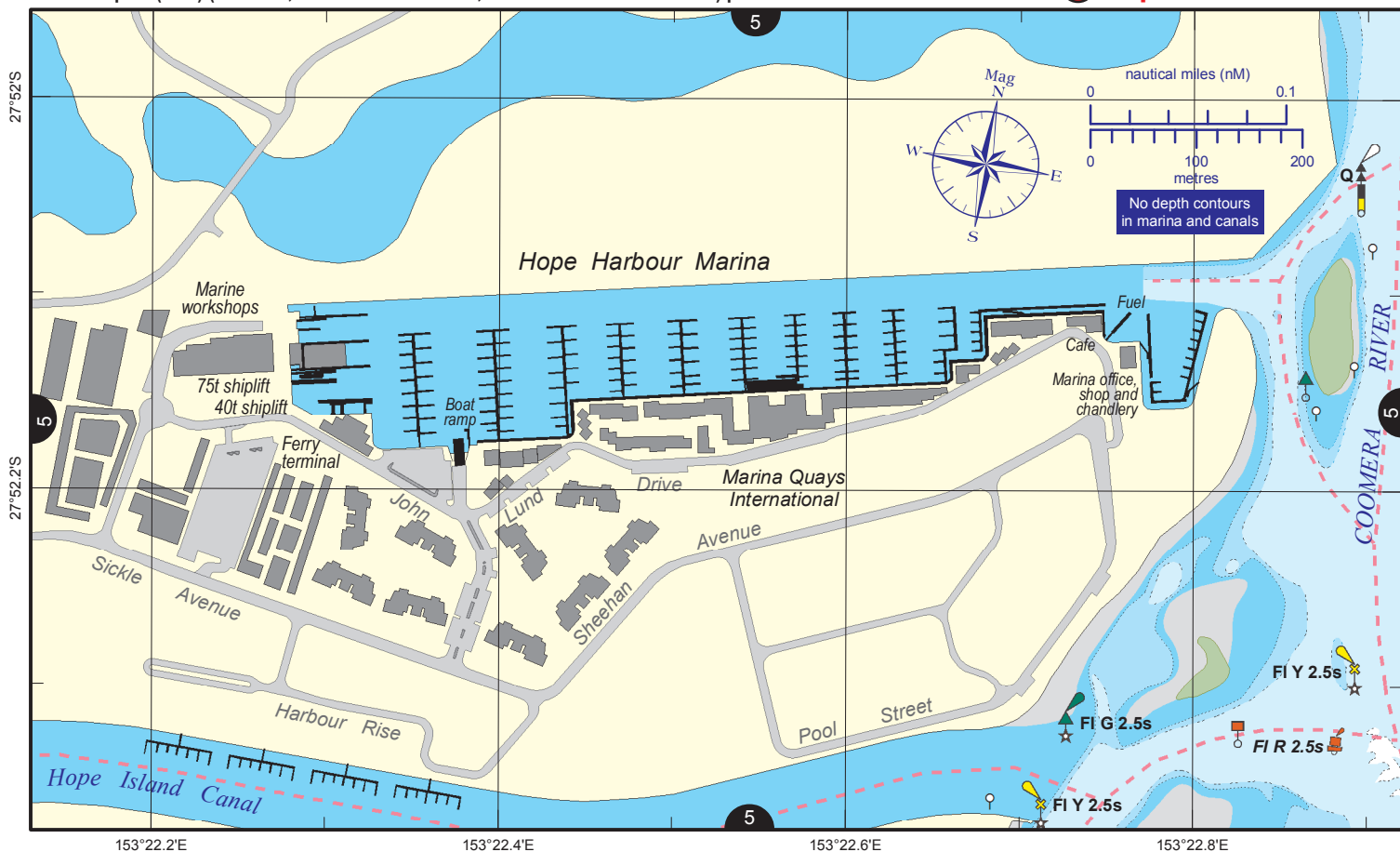
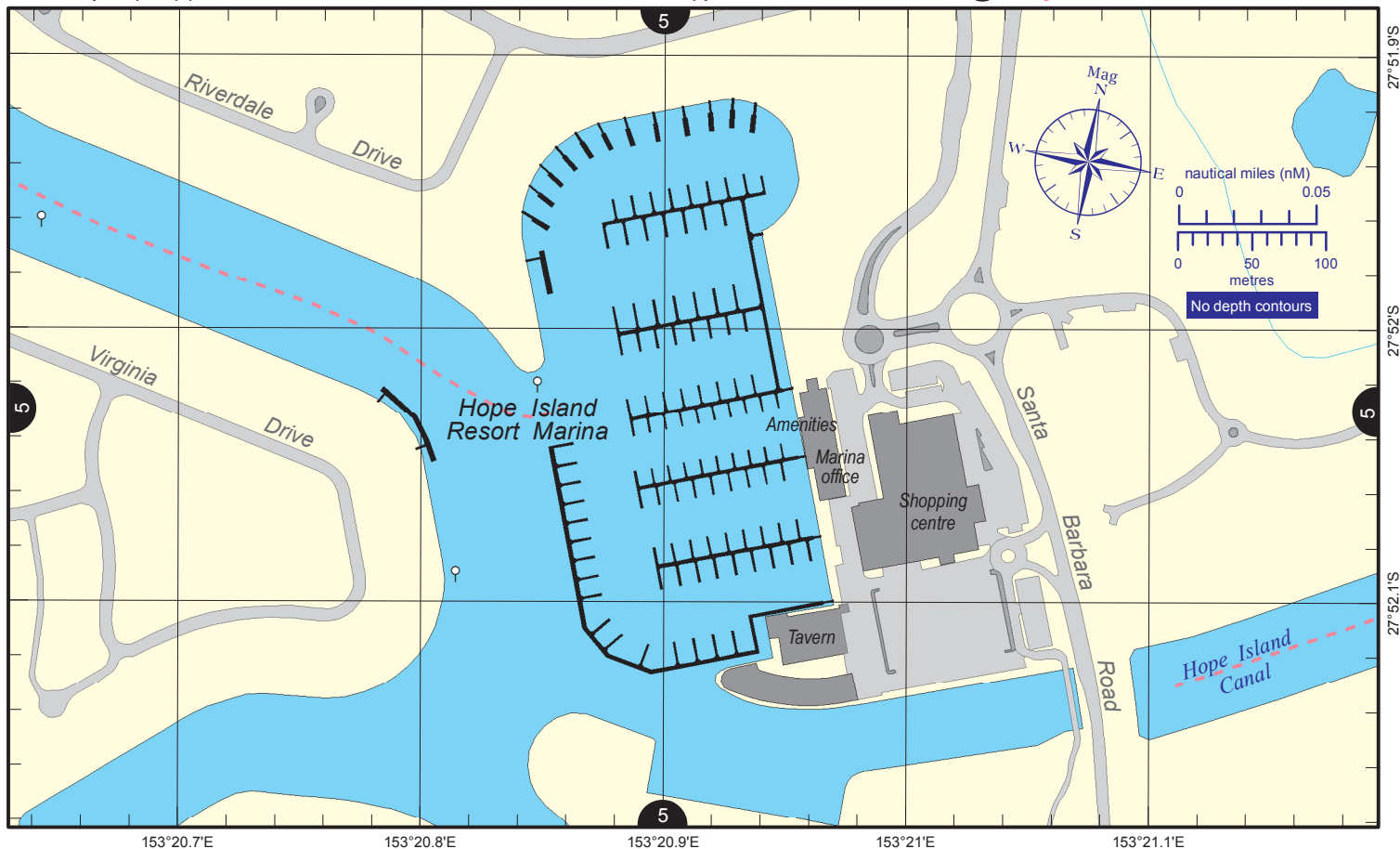
© Copyright The State of Queensland 2014

Queensland Department of Transport and Main Roads - Maritime Safety Queensland.

To reproduce any map within this series, see terms and conditions at Maritime Safety Queensland's website (www.msq.qld.gov.au)

Nautical information current to 16 June 2014.





Always keep a proper lookout when boating.

Look up and live for power and cable crossings that may not be shown on these maps due to scale or recent construction.

CAUTION: depth contours have not been re-surveyed in most areas since the 2011 and 2013 floods.

Exercise care when travelling outside suggested navigation tracks.

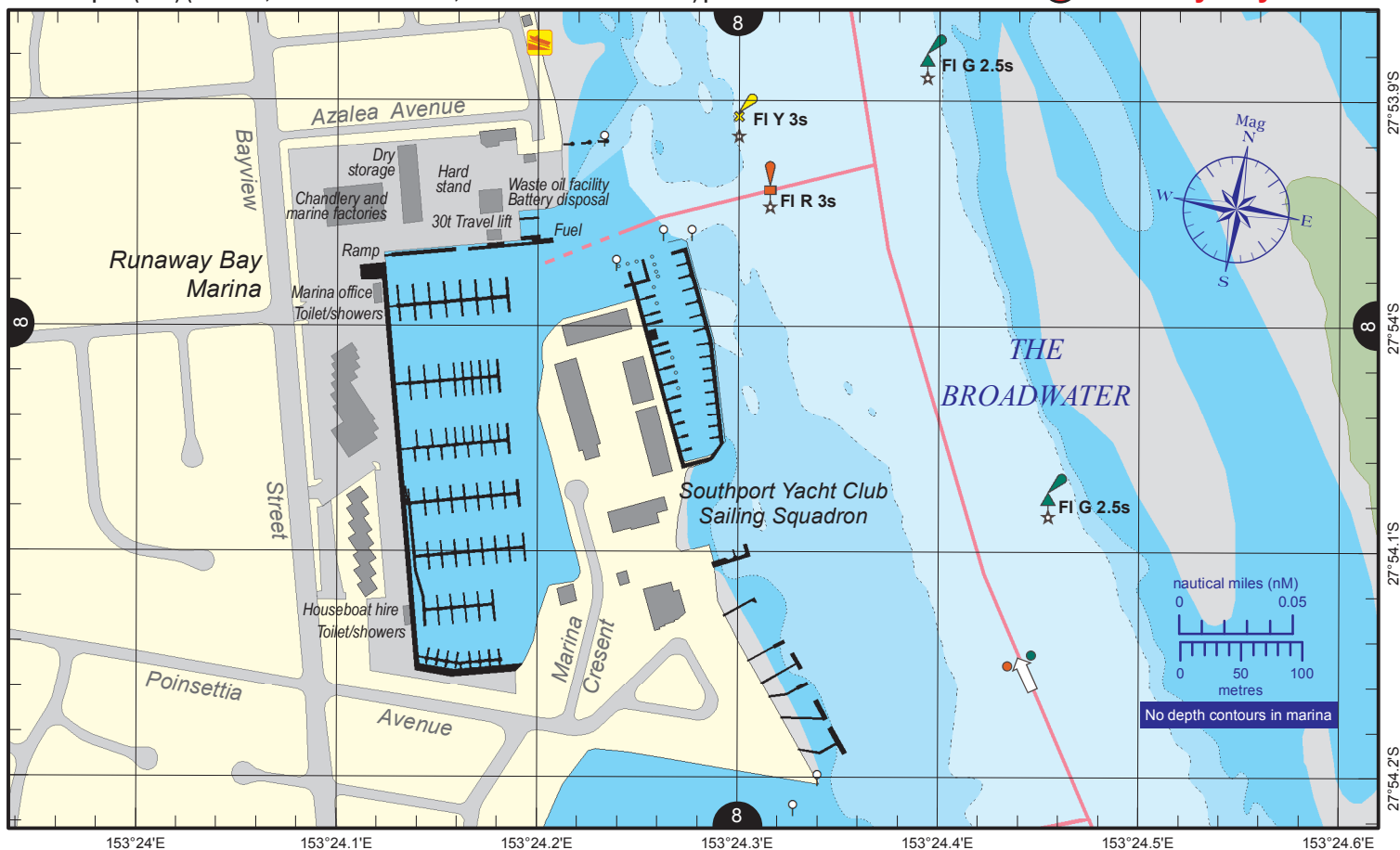
Nautical information current to 16 June 2014.

© Copyright The State of Queensland 2014

Queensland Department of Transport and Main Roads - Maritime Safety Queensland.

To reproduce any map within this series, see terms and conditions at Maritime Safety Queensland's website (www.msq.qld.gov.au)





Always keep a proper lookout when boating.

Look up and live for power and cable crossings that may not be shown on these maps due to scale or recent construction.

CAUTION: depth contours have not been re-surveyed in most areas since the 2011 and 2013 floods.

Exercise care when travelling outside suggested navigation tracks.

© Copyright The State of Queensland 2014

Queensland Department of Transport and Main Roads - Maritime Safety Queensland.

To reproduce any map within this series, see terms and conditions at Maritime Safety Queensland's website (www.msq.qld.gov.au)

Nautical information current to 16 June 2014.

